

GROUND FLOOR

SCHEDULE OF OPENING

SR. NO.	TYPE	SYMBOL	SIZE(M)
1.	DOOR	D	1.20 X 2.10
2.	WINDOW	W	1.50 X 1.20



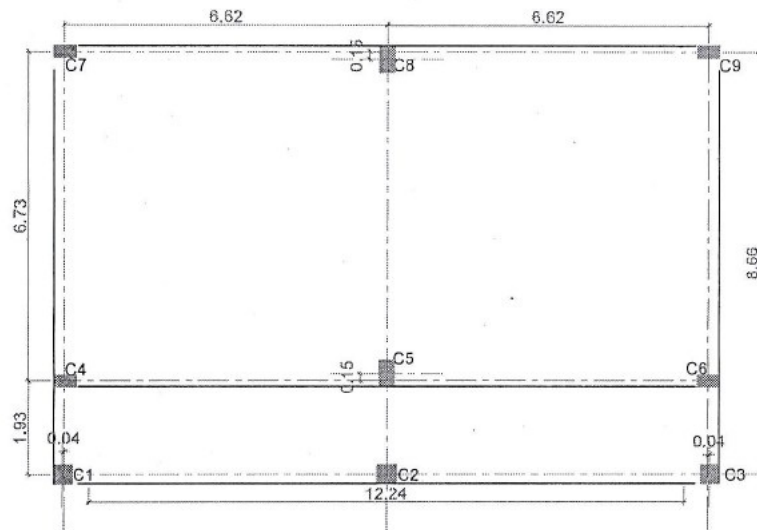
GOVERNMENT OF GUJARAT
ROADS AND BUILDINGS DEPARTMENT

DY. EXECUTIVE ENGINEER
PANCHAYAT (R&B) SUB DIVISION
CHIKHALI

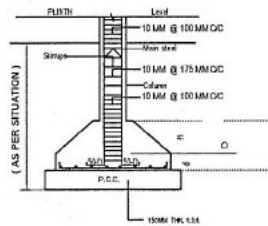
EXECUTIVE ENGINEER
PANCHAYAT (R&B) DIVISION
NAVSARI

SURVEY BY.	
DRAWN	
CHECKED	
APPROVED	
DRAWING NO.	1
SCALE	N.T.S

DRAWING TITLE :
**Construction of Two Class Room at
Amadhara Navjagruti Primary School.**
Taluka : Chikhli. District : Navsari.



CENTER LINE PLAN



DETAIL OF ISOLATED FOOTING

SCHEDULE OF R.C.C. COLUMN (M:250)

COLUMN NO.	COLUMN AT GROUND & BELOW GROUND		STIRRUPS		REMARK
	COL. SIZE	VER. STEEL	CONFINE ZONE L ₁ - L ₄	REST	
1,2,3	380 X 380	8 Φ 16MM	Φ 8MM @ 100 C/C Double Stirrups	Φ 8MM @ 175 C/C Double Stirrups	 Double Stirrups
4,6,7,9	230 X 450	4 Φ 16MM + 4 Φ 12MM	Φ 8MM @ 100 C/C Double Stirrups	Φ 8MM @ 175 C/C Double Stirrups	 DOUBLE STIRRUPS
5,8	300 X 530	8 Φ 16MM	Φ 8MM @ 100 C/C Double Stirrups	Φ 8MM @ 175 C/C Double Stirrups	 DOUBLE STIRRUPS

SCHEDULE OF R.C.C. FOOTING (M:250)

COLUMN NO.	P.C.C. 6" THK.	R.C.C.			TO SHORT SPAN	TO LONG SPAN
		L X B	D	d		
1,2,3	1800 X 1800	1500 X 1500	600	230	Φ 10MM @ 150 C/C	Φ 10MM @ 150 C/C
4,6,7,9	1950 X 1725	1650 X 1425	600	230	Φ 10MM @ 150 C/C	Φ 10MM @ 150 C/C
5,8	2400 X 2100	2100 X 1800	675	230	Φ 10MM @ 150 C/C	Φ 10MM @ 150 C/C



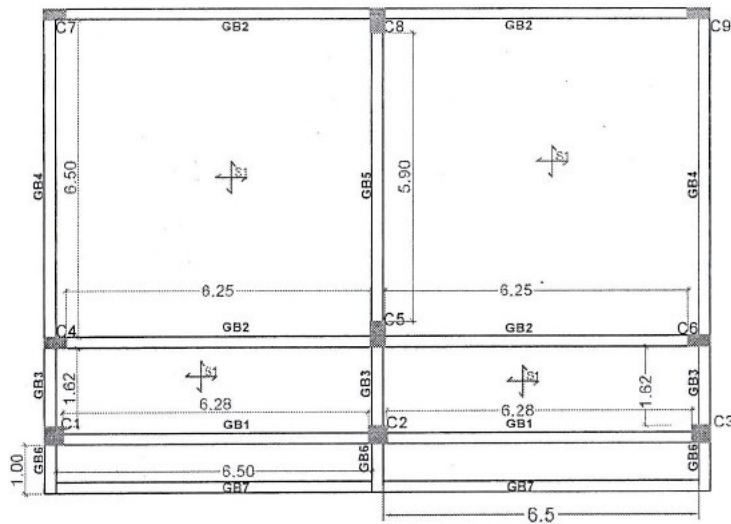
GOVERNMENT OF GUJARAT
ROADS AND BUILDINGS DEPARTMENT

DY. EXECUTIVE ENGINEER
PANCHAYAT (R&B) SUB DIVISION
CHIKHALI

EXECUTIVE ENGINEER
PANCHAYAT (R&B) DIVISION
NAVSARI

SURVEY BY.
DRAWN
CHECKED
APPROVED
DRAWING NO. 2
SCALE N.T.S.

DRAWING TITLE :
**Construction of Two Class Room at
Amadhara Navjagruti Primary School.**
Taluka : Chikhli. District : Navsari.



G.B. & P.B. PLAN

SCHEDULE OF R.C.C. GROUND & PLINTH BEAM (M:250)

BEAM NO	SIZE		BOTTOM STEEL STRAIGHT	CURTAIL		TOP STEEL	STIRRUPS	REMARK
	B	D		AT BOTTOM	AT TOP			
B1	230	450	12 MM ∇ 2 NOS	12 MM ∇ 1 NOS L/2	12 MM ∇ 1 NOS L/4	10 MM ∇ 2 NOS	∇ 8 MM @ 100-175 MM C/C	_____
B2	230	450	16 MM ∇ 2 NOS	16 MM ∇ 2 NOS L/2	16 MM ∇ 2 NOS L/4	12 MM ∇ 2 NOS	∇ 8 MM @ 100-175 MM C/C	_____
B3	230	450	16 MM ∇ 2 NOS	12 MM ∇ 2 NOS L/2	12 MM ∇ 2 NOS L/4	12 MM ∇ 2 NOS	∇ 8 MM @ 100-175 MM C/C	_____
B4	230	450	12 MM ∇ 2 NOS	12 MM ∇ 1 NOS L/2	12 MM ∇ 1 NOS L/4	10 MM ∇ 2 NOS	∇ 8 MM @ 100-175 MM C/C	_____
B5	230	450	12 MM ∇ 2 NOS	12 MM ∇ 1 NOS L/2	12 MM ∇ 1 NOS L/4	10 MM ∇ 2 NOS	∇ 8 MM @ 100-175 MM C/C	_____
B6	230	450	16 MM ∇ 2 NOS	16 MM ∇ 2 NOS L/2	16 MM ∇ 2 NOS L/4	12 MM ∇ 2 NOS	∇ 8 MM @ 100-175 MM C/C	_____
B7	230	450	12 MM ∇ 2 NOS	12 MM ∇ 1 NOS L/2	12 MM ∇ 1 NOS L/4	10 MM ∇ 2 NOS	∇ 8 MM @ 100-175 MM C/C	_____

SCHEDULE OF P.C.C. PLINTH SLAB (M:250)

SLAB	THIK. (IN MM)	MAIN STEEL	DISTRIBUTION STEEL	EXTRA TOP STEEL	REMARKS
S1	100	8 MM @ 200 mm C/C	8 MM @ 200 mm C/C	_____	TWO WAY SLAB



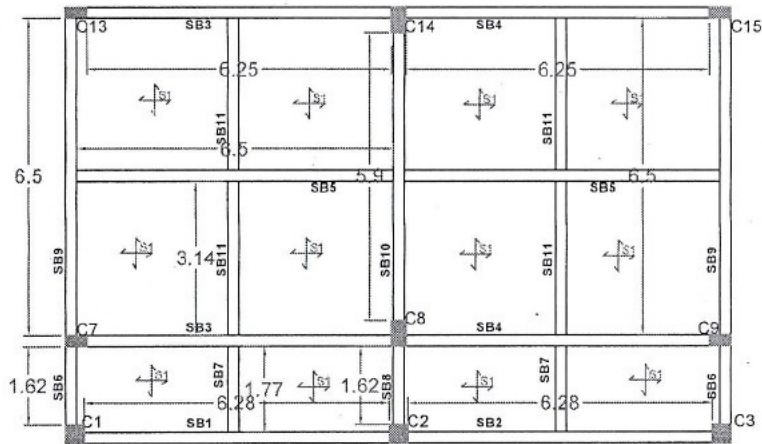
GOVERNMENT OF GUJARAT
ROADS AND BUILDINGS DEPARTMENT

DY. EXECUTIVE ENGINEER
PANCHAYAT (R&B) SUB DIVISION
CHIKHALI

EXECUTIVE ENGINEER
PANCHAYAT (R&B) DIVISION
NAVSARI

SURVEY BY.
DRAWN
CHECKED
APPROVED
DRAWING NO. 3
SCALE N.T.S

DRAWING TITLE :
**Construction of Two Class Room at
Amadhara Navjagruti Primary School.
Taluka : Chikhli. District : Navsari.**



SLAB BEAM PLAN

SCHEDULE OF R.C.C. FIRST SLAB BEAM (M:250)

BEAM NO	SIZE		BOTTOM STEEL	CURTAIL		TOP STEEL	STIRRUPS	REMARK
	B	D		AT BOTTOM	AT TOP			
B1	230	530	20 MM ∇ 2 NOS	16 MM ∇ 2 NOS	L/2	16 MM ∇ 2 NOS	∇ 8 MM @ 100-150 MM C/C	————
B2	230	530	20 MM ∇ 2 NOS	16 MM ∇ 2 NOS	L/2	16 MM ∇ 2 NOS	∇ 8 MM @ 100-150 MM C/C	————
B3	300	530	20 MM ∇ 3 NOS	20 MM ∇ 2 NOS	L/2	20 MM ∇ 3 NOS	∇ 8 MM @ 100-150 MM C/C	————
B4	300	530	20 MM ∇ 3 NOS	20 MM ∇ 2 NOS	L/2	20 MM ∇ 3 NOS	∇ 8 MM @ 100-150 MM C/C	————
B5	300	450	16 MM ∇ 4 NOS	18 MM ∇ 2 NOS	L/2	16 MM ∇ 3 NOS	∇ 8 MM @ 100-150MM C/C	————
B6	230	380	12 MM ∇ 2 NOS	12 MM ∇ 2 NOS	L/2	12 MM ∇ 2 NOS	∇ 8 MM @ 100-175 MM C/C	————
B7	230	380	12 MM ∇ 2 NOS	12 MM ∇ 2 NOS	L/2	12 MM ∇ 2 NOS	∇ 8 MM @ 100-175 MM C/C	————
B8	230	380	12 MM ∇ 2 NOS	12 MM ∇ 2 NOS	L/2	12 MM ∇ 2 NOS	∇ 8 MM @ 100-175 MM C/C	————
B9	300	530	20 MM ∇ 4 NOS	20 MM ∇ 2 NOS	L/2	20 MM ∇ 3 NOS	∇ 8 MM @ 100-150 MM C/C	————
B10	300	530	25 MM ∇ 4 NOS	25 MM ∇ 2 NOS	L/2	25 MM ∇ 2 NOS	∇ 8 MM @ 100-150 MM C/C	————
B11	300	530	25 MM ∇ 4 NOS	25 MM ∇ 2 NOS	L/2	25 MM ∇ 2 NOS	∇ 8 MM @ 100-150 MM C/C	————

SCHEDULE OF R.C.C. FIRST SLAB (M:250)

SLAB	THIK. (IN MM)	MAIN STEEL	DISTRIBUTION STEEL	EXTRA TOP STEEL	REMARKS
S1	125	10 MM @ 150 mm C/C ALT. BAR BENT	10 MM @ 150 mm C/C	10 MM @ 300 mm C/C	ONE WAY SLAB



GOVERNMENT OF GUJARAT
ROADS AND BUILDINGS DEPARTMENT



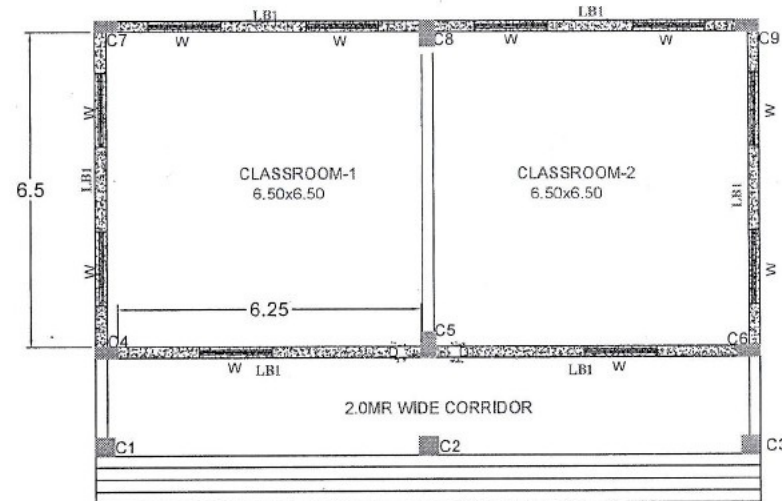
DY. EXECUTIVE ENGINEER
PANCHAYAT (R&B) SUB DIVISION
CHIKHALI

EXECUTIVE ENGINEER
PANCHAYAT (R&B) DIVISION
NAVSARI

SURVEY BY.
DRAWN
CHECKED
APPROVED
DRAWING NO. 4
SCALE N.T.S

DRAWING TITLE :

**Construction of Two Class Room at
Amadhara Navjagruti Primary School.
Taluka : Chikhli. District : Navsari.**



SCHEDULE OF R.C.C. LINTEL BEAM

BEAM NO	SIZE		BOTTOM STEEL	BENT UP				TOP STEEL	STIRRUPS	REMARK
	B	D	STRAIGHT	AT BOTTOM	—	AT TOP	—			
LB1	230	75	2 \varnothing 12	—	—	—	—	2 \varnothing 10	\varnothing 8 mm @ 150 C/C	—



GOVERNMENT OF GUJARAT
ROADS AND BUILDINGS DEPARTMENT

DY. EXECUTIVE ENGINEER
PANCHAYAT (R&B) SUB DIVISION
CHIKHALI

EXECUTIVE ENGINEER
PANCHAYAT (R&B) DIVISION
NAVSARI

SURVEY BY.	
DRAWN	
CHECKED	
APPROVED	
DRAWING NO.	5
SCALE	N.T.S

DRAWING TITLE :
**Construction of Two Class Room at
Amadhara Navjagruti Primary School.
Taluka : Chikhli. District : Navsari.**